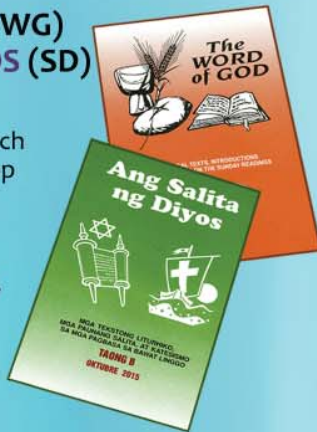


THE WORD OF GOD (WG) ANG SALITA NG DIYOS (SD)

Monthly biblical/liturgical/ catechetical periodicals which enable the reader to develop in depth the themes of the liturgical readings of each Sunday and other major liturgical events of the year.



Contents:

For every Sunday/Feast Day, WG/SD feature the **complete liturgical text** (prayers, biblical readings, prayer of the faithful, and preface), with appropriate **introductions** to the celebration and the readings, and a **detailed catechesis** on the theme and readings of the day.

Audience:

Priests, Liturgical Animators, Lectors and Commentators, Catechists, Leaders of BECs, Religion Teachers, Religious Communities and Formation Institutions, such as Seminaries and Novitiates.

EUCHALETTE (EU) PATNUBAY SA MISA (PM)

A 4-page **weekly** leaflet, available in English and Tagalog. It is a valuable tool for an active participation in the Sunday Liturgy, as well as for personal and group reflection on the Sunday themes and readings.



Contents:

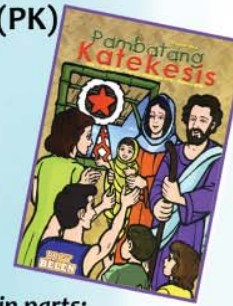
In addition to the **liturgical texts** (prayers & readings), the leaflet contains also a concise **introduction** to the Sunday Eucharist, **reflections** on the themes of the various liturgical events, and other **relevant pieces of information**.

Audience:

All churchgoers

PAMBATANG KATEKESIS (PK)

A **quarterly** periodical in Tagalog for the preparation and animation of the liturgical celebrations for children in parishes and schools.



Contents:

Every issue is divided into **two main parts**:

1. A collection of **lesson plans on the theme and Gospel passage of each Sunday or important feast day**.
2. Useful **tips on how to animate the Sunday liturgical celebrations for children, and outlines for homilies for them**.

Audience:

Catechists and Liturgical Animators of Children's Masses

THE MESSENGER OF DIVINE LOVE (MDL)

A **quarterly** inspirational/ devotional magazine on the major Catholic devotions, Church movements, and various religious topics, useful for the Christian formation of youth and adults.



Contents:

Testimonies and a variety of articles on issues relevant to Christian life, contemporary problems, achievements difficulties and hopes of the Church.

Audience:

Families, BECs, parish mandated organizations, religious communities, charismatic groups, devotees of the Sacred Heart and the Divine Mercy, and all young people

Word & Life Publications

Don Bosco Compound A. Arnaiz Ave. cor. Chino Roces Ave.

P.O. Box 1820, MCPO 1258 Makati, Philippines

Tel. Nos. (632) 894-5401 • 894-5402

Telefax: (632) 894-5241 • Cell# 0933-4932136

E-mail: marketing@wordandlife.org

wordandlifepublications@gmail.com

Website: www.wordandlife.org

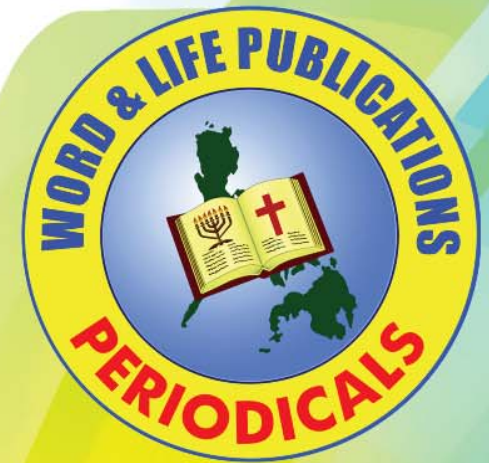
WELCOME

to the home of

C.M.M.A

(CATHOLIC MASS MEDIA AWARDS)

AWARD WINNERS:



Indispensable tools for the New Evangelization and Catechesis that are . . .

- * rooted in God's Word;
- * Liturgy-based;
- * Community forming; and
- * commitment-oriented.

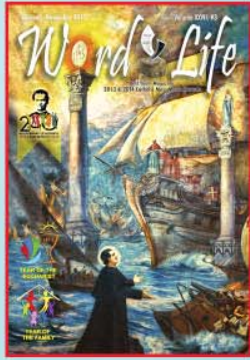
Discover the features of each of these periodicals as you

READ ON . . . →

WORD & LIFE (WL)

A *bimonthly* magazine, all in full color, for the youth and the young at heart. It has undergone a constant evolution and improvement in response to suggestions from the readers, teachers and catechists. It integrates the living Word of God with the life of the young, with the aid of leading them to a committed Christian life.

For four times it has received from the Catholic Mass Media Awards (CMMA) the trophy "Best Youth Magazine."



Contents:

Three main parts:

"Word Section" on the Sunday themes and readings;

"Comics Section," featuring the lives of Jesus Christ and other faith heroes;

"Life Section" with a variety of articles on the most diverse topics, and contributions from readers.

Audience:

Grades Six and Seven, High School and College Students, Seminarians, Pastors, and Educators who want to keep in touch with the world of the young.



EXPLORING GOD'S WORD (EGW)

A *semestral* publication totally focused on the theme and readings of each Sunday and major feast days. It aims to lead the users to an in depth knowledge of the biblical readings used in the Sunday liturgy.

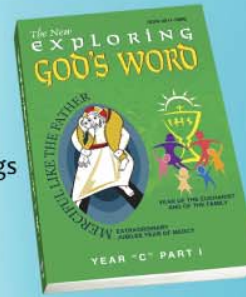
Contents:

For each Sunday, each issue features an **introduction to the Theme**, the full **text of each reading**, and **questions** for the discovery and application of their messages to the life of the readers.

Each issue also contains the **explanation of names, places, and events** found in the Biblical texts; a set of **maps** that help find the location of the places mentioned in the text; and an **"Appendix"** consisting of various articles related to elements of the Catholic faith or major events in the life of the Church.

Audience:

High School and College Students, Seminarians, Lectors & Commentators, Catechists, Leaders of Basic Ecclesial Communities (BECs), and other committed Catholic Lay Leaders.



ANG BAGONG SALITA AT BUHAY (BSB)

A *bimonthly* publication with cover in full color and inside pages in B/W. It is the Filipino version of *Word & Life* (the magazine) and *Exploring God's Word* rolled into one.

Contents:

BSB is divided into 3 parts:

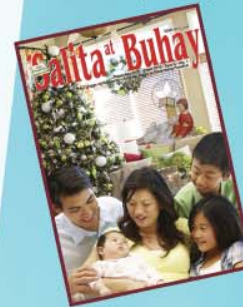
"Word Section" on the Sunday themes and readings;

"Comics Section," featuring the lives of saints and other topics of religious or inspirational nature;

"Life Section" covering a variety of topics.

Audience:

High School and College Students, Priests, Seminarians, Lectors and Commentators, Catechists, BECs members and other committed Lay Catholics.



TEACHER'S NOTES (TN)

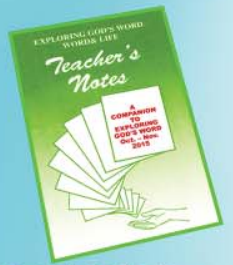
A *bimonthly* companion to *Exploring God's Word* and *Ang Bagong Salita at Buhay*.

Contents:

Series of **lesson plans** on the theme and readings of each Sunday/feast day, together with practical **methodological suggestions**, **value clarification** and **integration** between to the readings of each Sunday/feast day and lives of the readers of EGW.

Audience:

Priests, Religion Teachers, and Catechists who are using *Exploring God's Word* and or *Ang Bagong Salita at Buhay*.



TEACHER'S GUIDE (TG)

A *bimonthly* companion to *Word & Life* magazine

Contents:

Series of **lesson plans** on the theme and readings of each Sunday/feast day, together with practical **methodological suggestions**, **value clarification** and **application of the messages of God's Word to the life of the readers of the magazine**.

Audience:

Priests, Religion Teachers, and Catechists who are using WL with the parishioners or students.

